

# No Longer Slaves

Words and Music by  
Jonathan David Helser,  
Brian Johnson and Joel Case

♩=74

## VERSE 1

D



1. You un - rav - el me with a mel - o - dy. You sur - round .

3

G A D



— me with — a song — of de - liv - er - ance from my en - e -

6

G A D

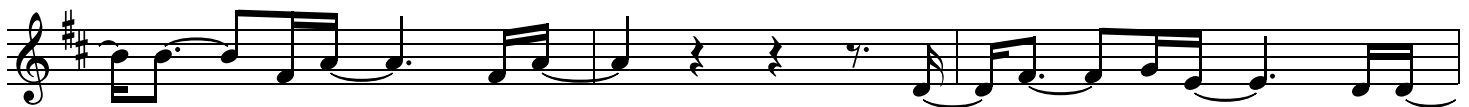


- mies till all — my fears — are gone. — I'm no long

## CHORUS

9

G A D Bm A



- er — a slave — to fear; — I — am — a child — of God. .

12

D G A D



— I'm no long - er — a slave — to fear; — I —

## INSTRUMENTAL

15

Bm A Bm A D G Bm A



— am — a child — of God. —

VERSE 2

19 D G D F#m

2. From my Moth-er's \_\_\_ womb You have cho - sen me; Love .

22 G A D

\_\_\_ has called \_\_\_ my name. \_\_\_ I've been born \_\_\_ a-gain in - to Your fam-

25 F#m G A D

- i - ly; Your blood \_\_\_ flows through \_\_\_ my veins. \_\_\_ I'm no long-

CHORUS

28 G A D Bm A

- er \_\_\_ a slave \_\_\_ to fear; \_\_\_ I \_\_\_ am \_\_\_ a child \_\_\_ of God. .

31 D G A D

\_\_\_ I'm no long - er \_\_\_ a slave \_\_\_ to fear; \_\_\_ I \_\_\_

34 1. Bm A D 2. Bm A

\_\_\_ am \_\_\_ a child \_\_\_ of God. \_\_\_ I'm no long - \_\_\_ am \_\_\_ a child \_\_\_ of God. .

INSTRUMENTAL

37 Bm A D G Bm A D G repeat as desired

repeat as desired

BRIDGE

41 Bm A D G Bm A

Musical notation for line 41: Treble clef, key signature of one sharp (F#), 7/8 time signature. The melody consists of eighth and quarter notes. Chords Bm, A, D, G, Bm, and A are indicated above the staff.

You split the sea so I could walk right through it. My fears were drowned in per-fect

44 D G Bm A D F#m

Musical notation for line 44: Treble clef, key signature of one sharp (F#), 7/8 time signature. The melody continues with eighth and quarter notes. Chords D, G, Bm, A, D, and F#m are indicated above the staff.

love. \_\_\_\_ You res-cued me so I could stand and sing: I am .

47 G A 1. D 2. D G A

Musical notation for line 47: Treble clef, key signature of one sharp (F#), 7/8 time signature. The melody features a repeat sign with two endings. Chords G, A, D, D, G, and A are indicated above the staff.

— a child \_ of God. \_ I am a child of

51 1. D 2. D repeat as desired

Musical notation for line 51: Treble clef, key signature of one sharp (F#), 7/8 time signature. The melody includes a repeat sign with two endings. Chords D and D are indicated above the staff.

God. I God. I'm no long

CHORUS

55 G A D Bm A

Musical notation for line 55: Treble clef, key signature of one sharp (F#), 7/8 time signature. The melody starts with eighth and quarter notes. Chords G, A, D, Bm, and A are indicated above the staff.

- er \_\_\_\_ a slave \_ to fear; \_ I \_\_\_\_ am \_\_\_\_ a child \_ of God. .

58 D G A

Musical notation for line 58: Treble clef, key signature of one sharp (F#), 7/8 time signature. The melody continues with eighth and quarter notes. Chords D, G, and A are indicated above the staff.

— I'm no long - er \_\_\_\_\_ a slave \_ to fear; \_

60 D Bm A D

Musical notation for line 60: Treble clef, key signature of one sharp (F#), 7/8 time signature. The melody concludes with eighth and quarter notes. Chords D, Bm, A, and D are indicated above the staff.

— I \_\_\_\_ am \_\_\_\_ a child \_ of God. \_