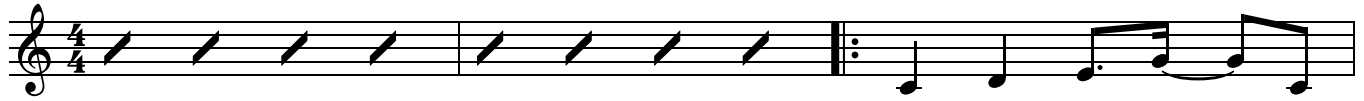


My Lighthouse

Words and Music by
Gareth Gilkeson and Chris Llewellyn

♩=110 **INTRO**
C

♩ **VERSE**
C



1. In my wres - tling, _ and
2. In the si - lence, _ You
3. I won't fear what _ to -



in _ my doubts, in my fail - ures, _ You won't walk _ out. Your great love will _
won't _ let go. In the ques - tions, _ Your truth will _ hold. Your great love will _
-mor - row brings. With each morn - ing, _ I'll rise and _ sing. My God's love will _



lead me through; You are the peace _ in my trou - bled sea, whoa oh,
lead me through; You are the peace _ in my trou - bled sea, whoa oh,
lead me through; You are the peace _ in my trou - bled sea, whoa oh,



You are the peace _ in my trou - bled sea.
You are the peace _ in my trou - bled sea.
You are the peace _ in my trou - bled sea.

1.



My Light - house, _ my Light - house _ shin - ing in the dark - ness,

19 Am⁷ G^{sus} F² C Am⁷ G^{sus}

I will fol-low You! _ Oh, _ my Light - house, _ my Light - house, _

22 F² C Am⁷ G^{sus} F² C

I will trust the prom - ise: You will car-ry me _ safe _ to shore, _

25 G F² C G

_ safe to shore, _ safe to

28 F² C G C

shore, _ safe to shore.

32 BRIDGE F² C Am⁷ G

Fire _ be - fore us, _ You're _ the bright - est. _

35 F² C

You _ will lead us _ through the storms. through the storms. Hey!

38 Am⁷ G F² C Am⁷ G

through the storms. Fire _ be - fore us, _ You're _ the bright - est. _

CHORUS

41 F² C Am⁷ G F² C

You _ will lead _ us _ through the storms. My Light - house, _

44 Am⁷ G^{sus} F² Am⁷ C Am⁷ G^{sus}

my Light - house _ shin - ing in the dark - ness, I will fol-low You! _ Oh, _

47 F² C Am⁷ G^{sus} F² C

my Light - house, _ my Light - house, _ I will trust the prom - ise:

50 Am⁷ G^{sus} F² C G

You will car - ry me _ safe _ to shore, _____ safe to

53 F² C G

shore, _____ safe to

55 F² C G C

shore, _____ safe to shore.