

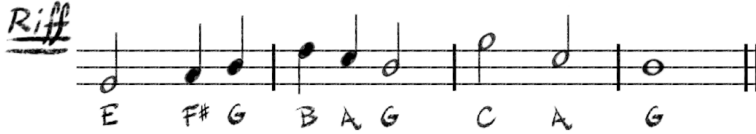
Goodness of God

Words and Music by B.Fielding | B.Johnson | E.Cash | J.Ingram | J.Johnson

Key: G

(4/4) 65 bpm

Intro/Riff : C / / / | G D Em / | C / D / | G / / / ||



Guitar Notes

E F# G A B C
5 7 8 5 7 8
② ——— ① ———

Uke Notes

E F# G A B C
0 2 3 0 2 3
② ——— ① ———

- 1. I love You Lord, oh Your mercy never fails me**
 (G) D_{/F#} Em⁷ C D^{sus}
All my days, I've been held in Your hands
 (D) Em⁷ C G D_{/F#} Em⁷
From the moment that I wake up, until I lay my head
 C D^{sus} G
I will sing of the goodness of God

Chorus:

C G
All my life You have been faithful
 C G D^{sus}
All my life You have been so, so Good
 C G D_{/F#} Em⁷
With every breath that I am able
 C D^{sus} G || Tag: Em⁷
 Tag (2X) : **I will sing of the goodness of God** || **God**

- 2. I love Your Voice, You have led me through the fire**
 (G) D_{/F#} Em⁷ C D^{sus}
In darkest night, You are close like no other
 (D) Em⁷ C G D_{/F#} Em⁷
I've known You as a Father, I've known You as a friend
 C D^{sus} G
I have lived in the goodness of God

Bridge:

G_{/B} C D^{sus} G
Your goodness is running after, it's running after me
 G_{/B} C D^{sus} G
Your goodness is running after, it's running after me
 G_{/B} C D^{sus} Em⁷
With my life laid down I'm surrendered now, I give You everything
 G_{/B} C D^{sus} G
Your goodness is running after, it's running after me

Goodness of God, p.2

Chorus Riff

Musical notation for the Chorus Riff. The staff shows a sequence of notes: E, F#, G, B, E, F#, G, B, A, E, F#, G, B, A, G, C, A, G. The notes are grouped into pairs of eighth notes. A 'Tag' section is marked with an asterisk and a circled 'x' above the final notes C, A, G.

Drum Parts

Intro / V1

Drum notation for Intro / V1. The staff shows four eighth notes marked with 'x' and a curved line, indicating a ride cymbal pattern. The notation ends with a double bar line and repeat dots.

Ch1

Drum notation for Ch1. The staff shows four eighth notes marked with 'x' and a curved line (ride cymbal), and four eighth notes marked with a curly brace (hi-hat). The notation ends with a double bar line and repeat dots.

V2 (1st 2m.)

Drum notation for V2 (1st 2m.). The staff shows a complex pattern of eighth notes marked with 'x' and curly braces, indicating a combination of ride cymbal and hi-hat patterns. The notation ends with a double bar line.

V2 / Chorus

Drum notation for V2 / Chorus. The staff shows a complex pattern of eighth notes marked with 'x' and curly braces, indicating a combination of ride cymbal and hi-hat patterns. The notation ends with a double bar line.

Bridge

Drum notation for Bridge. The staff shows a complex pattern of eighth notes marked with 'x' and curly braces, indicating a combination of ride cymbal and hi-hat patterns. The notation ends with a double bar line.

Guitar Notes

B E F# G A B C
 0 5 7 8 5 7 8
 ② ——— ① ———

Uke Notes

E F# G A B C
 0 2 3 0 2 3
 ② ——— ① ———